

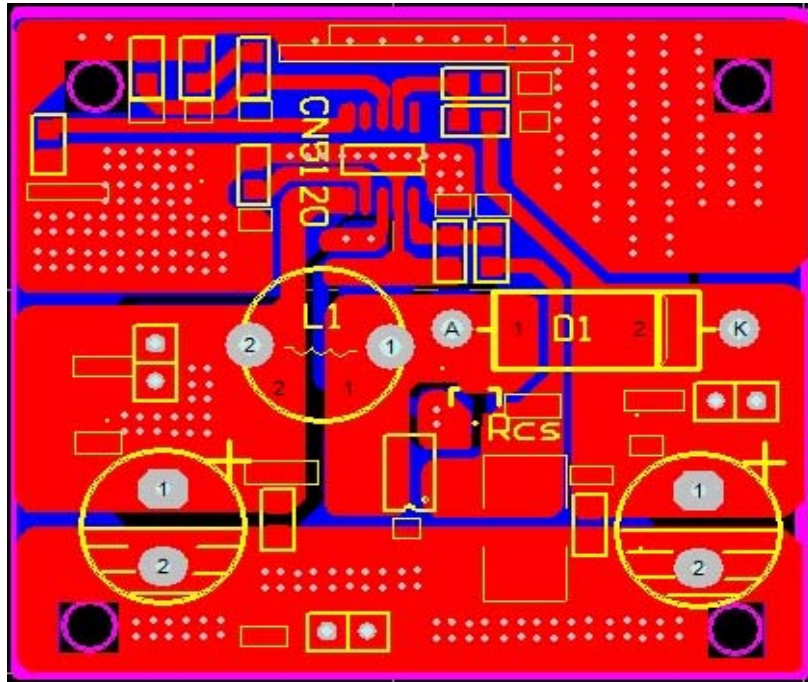
CONSONANCE

Quick Start of CN5120 Demo Board

1、 Overview

CN5120 demo board is for the purpose of fast evaluation of CN5120.

2、 PCB Layout of CN5120 Demo Board



3、 Component List and Descriptions

No.	Name	Description
1	VIN+	Positive Terminal of Input Power Supply.
2	GND	Negative Terminal of Input Power Supply.
3	Vout	Output Positive Connection Terminal.
4	CN5120	Step up DC-DC Controller IC CN5120
5	R1	Output Voltage Setting Resistor.
6	R2	Output Voltage Setting Resistor.
7	R3	The Closed Loop Compensation resistor.
8	R4	The Filtering Resistor. 1K resistor can be used.
9	EN/ON	Shutdown Input.
10	R _{cs}	The Inductor Current Sense Resistor.
11	L1	Inductor.
12	D1	Rectifier Diode. Schottky diode is better for higher frequency.
13	M1 or M1-1	External N-Channel MOSFET. The MOSFET available in SOP8 or SOT23 package can be used.

(Continued on the next page)

CONSONANCE

(Continued from the last page)

No.	Name	Description
14	C_{IN} and C_{IN_1}	Input Bypassing Capacitors. Electrolytic and ceramic capacitors can be used.
15	C_o and C_{o1}	Output Capacitance. Electrolytic and ceramic capacitors can be used.
16	C1	The Closed Loop Compensation Capacitor.
17	C2	The Closed Loop Compensation Capacitor.
18	C3	+5V Bypassing Capacitor. 4.7uF or 10uF ceramic capacitors can be used.
19	C4	The Filtering Capacitor. 100pF capacitor can be used.